



The Valley View



MARCH

Greater Madison Valley Community Council

1996

OLD FRIEND

We had not seen much of Dolores Alexander since the Courtyard Sale, though she contributed to the Spaghetti dinner, and after chatting with her, we could understand why!

Dee is one of those generous caregivers, not only administering to her own family, who have special needs, but she immediately responded to David Foecke's letter asking for volunteers to clean, refurbish, and restore Martin Luther King School.

Meanwhile she's had carpal-tunnel surgery on one wrist and needs to repeat on the other, whilst fighting off a massive ear infection. We are looking forward to seeing her at our meetings. We wish her well. Pearl Castle

SCHOOL LEVY - VOTE YES TUESDAY MARCH 26TH

BY PEGGY SUSSMAN

The Madison Valley community has always supported our schools, and the need for an overwhelming YES vote on March 26th is crucial. Since 23% of the district's budget depends on the maintenance levy, Martin Luther King School would lose a number of teachers, the all day kindergarten program, support staff, Head Start, vocational training, athletic programs, field trips and much more!

This is not a new levy, but a renewal of the current levy. We need these funds, we need your vote!

VOTE YES!

CHANGE IN MONTHLY MEETING FORMAT

BY CELINE GRENIER

Beginning with the next monthly meeting of the Greater Madison Valley Community Council, individuals or groups from our neighborhood who want to bring neighborhood-related issues to the Community Council will be heard at the beginning of each meeting. Each person or group will have five minutes to speak, before discussion. The standard meeting agenda will begin after everyone from the neighborhood has spoken, or at 8:00 p.m., whichever comes first. So bring your concerns to the council. You won't even have to wait around to be heard!

KID'S KORNER BY ROBBIN BUCKLEY

Find these local street names and other words found in the Community Council Newsletter, and draw a line through them. Search up, down, diagonal, horizontal, and backwards.

M A L I N E L D N A C
E F A P E L S D I K K
M U K H O L I D A Y O
A N E W S L E T T E R
G A W H W V Y M I O N
G B A U V X C A E E E
N U S Y H D A D N U R
I S H E A E P I K E V
K H I S R W P S B G C
R S N L R E Y O C M X
E C G E I Y F N E U C
H H T R S G N S N T R
T O O W O H H I X E N
U O N A N I O J P K D
L L M Y L N J U L O O
N N O Y E Q B R Y O E
I A Z W P L V E C L D
T I S E I U I E Z A R
R K O C F I T C I G E
A F I M A V A P P L E
M A I V I E W A A P Y
N S H F U N M S H A P

DOES YOUR CHILD HAVE ASTHMA?

Asthma is the leading chronic illness of children in the United States, and the leading cause of school absenteeism due to chronic illness. The Central Area and Southeast Seattle have the highest hospitalization rates for asthma. We do not know why. Research shows that exposure to indoor air pollution could be a factor. Asthma can be aggravated by exposure to dust, pets, and toxic cleaning products.

You may be surprised to learn that the air inside your home may be more seriously polluted than the outdoor air. To reduce your exposure to indoor air pollution, the Community Coalition for Environmental Justice in partnership with the American Lung Association of Washington, is providing free indoor air quality assessments in the Central District and Southeast Seattle. For more information, please call Yalonda Allen, Program Coordinator at (206) 527-1695.

LETTER FROM THE EDITORS

We have been pleased with the help of the staff from the V-TECH LAB in producing the newsletter.

We are looking forward to your help as well. Send us your ideas on new articles, poems, recipes, even human interest stories from your neighborhood. Our goal is to keep the Greater Madison Valley informed and have you involved in the success of the newsletter and our community.

ANSWERS TO KID'S KORNER

DENNY WAY, UNION, LAKE WASHINGTON, JOHN, MADISON, PIKE, HARRISON, PINE, REPUBLICAN, MARTIN LUTHER KING, DEWEY, YESLER WAY

Bonus Words: NEWS, VALLEY VIEW, HOLLIDAY, KIDS KORNER, VTEC, and BUSH.

GYPSY MOTH SPRAYING

by J. Sussman

THEY'RE COMING TO SPRAY THE GYPSY MOTH OVER YOUR HOUSE AND MINE!

ARE YOU READY?

Several Asian gypsy moths have been caught in our neighborhood, close to Bush School and Martin Luther King School. The caterpillars that grow from these moths' eggs are a dangerous pest that can defoliate entire stands of trees and shrubs, and will kill them. If they become established here, as related moths have in Atlantic coast states, we could suffer a disheartening loss of our treasured greenery.

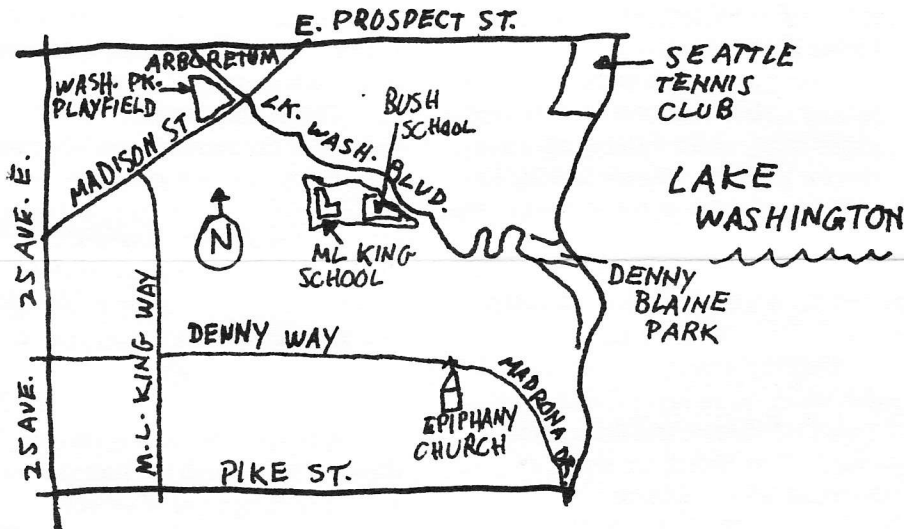
In two public meetings on February 20 and 21, the Washington State Department of Agriculture (WSDA) pest management staff explained their plan for eradicating the moth before it can spread widely here. They propose spraying B.t.k., a naturally occurring soil bacterium (live, in a water base) that will kill the caterpillars. There will be three applications from helicopters about seven to fourteen days apart. They will fly from 4:00 a.m. to 7:00 a.m. on weekdays only, beginning late April and ending early June.

The State Department of Health believes there is little risk to humans or pets from this insecticide, but cautions us to remain indoors at least 30 minutes after the aircraft pass over. Those who are susceptible to respiratory problems or who have an immune deficiency should avoid exposure to the moist spray until it is dry on the ground. Several citizens did raise questions at the meetings about unknown side effects and the large area to be treated.

The WSDA sent out thousands of information letters but the public meetings were not well attended. Many residents are probably still unaware of the plan. As you can see in the sketch map, the area to be sprayed is about four-fifths of a square mile and will include extensive lake shore, the south part of the Arboretum, all of Madison Valley, M.L.K School and Bush School, the Seattle Tennis Club, all of Denny Blaine, Epiphany Church, and the north part of the Madrona neighborhood.

If you have any questions or comments you may call WSDA at this toll-free number: 1-800-443-6684, Monday - Friday from 8:00 a.m. to 5:00 p.m. For a second opinion call Seattle King County Health Department at (206) 296-4600.

GYPSY MOTH SPRAY AREA



**Good
Neighbors!**

Buying or selling a home? \$200 donated to GMVCC for each neighbor's referral.

Call Pennu Bolton

The Landmark Group on the corner of E. Madison and Lake Wash, Blvd.
325-6000/325-5074

RENT-A-YENTA



A
HOUSECLEANING
SERVICE

Debra Schwartz, Owner
206/325 • 8902 Seattle
206/454 • 1512 Eastside

LICENSED • BONDED • INSURED

ISIS COLLECTIBLES

511 - 28th Ave. East
SEATTLE Washington, 98112
323-1795

TUESDAYS TO FRIDAYS 12-4
SATURDAYS BY APPOINTMENT

ANTIQUES · COLLECTIBLES
GIFTS · CONSIGNMENTS



CAFE FLORA

2901 EAST MADISON
SEATTLE, WASHINGTON
98112
(206) 325-9100

ROANOKE HOME RESTORATION

Complete restoration &
remodel services

Art Huffine

Licensed, Bonded, Insured
#ROANOHR088D0

1934 - 14th Avenue E.
Seattle, WA 98112

(206) 329-6139

MADISON VALLEY WELCOMES NEW BUSINESS

BY ROBBIN BUCKLEY

Do you ever wish that you could just escape the daily tensions and stress from your job, traffic, children, or even housework? Now you can!!

Kathryn A. McCormick, LMP, offers you the solution. Think of it! One full hour of total relaxation from a variety of Massage Techniques.

Massage Modalities Offered:

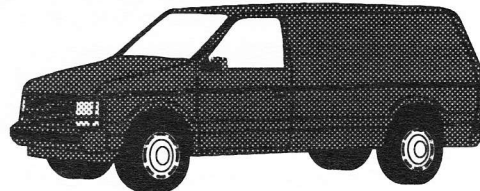
Swedish, Deep Tissue, Hawaiian Body - work, Treatment, Pregnancy, Postpartum.

In - Clinic/Out-call Consultation available. For an appointment stop by 2705 E. Madison, or call (206) 323-0880.

AGENDA, COMMUNITY COUNCIL MEETING, MARCH 19

Highlights of the meeting include a representative from the Seattle Engineering Department who will discuss changes to the intersection of 23rd and Madison. Other transportation issues will include a proposed center turn lane along Madison from 23rd to Lake Washington Boulevard, as well as changes to the intersection at Madison and Lake Washington Boulevard.

**Are you interested in
providing transportation
to school for your
children? Use our van!
Call Lorenzo: 325-1454.**



THANKS

The editors of The VALLEY VIEW would like to thank the staff of the V-TEC Lab, with special thanks to John Dirkman, and Dug Steen. The student staff helped the new editors produce this issue of the Newsletter

We would like the community to know that this issue was produced totally at the V-TEC COMPUTER LAB.

RECIPE OF THE MONTH

FROM DARRELL WELSH

RED VELVET CAKE

Ingredients:

1 cup shortening	1 1/2 cups sugar
2 eggs	1 cup milk
1 T. vanilla	1 T. vinegar
2 1/2 cups flour	1 t. baking soda
1 t. salt	2 T. cocoa
1/4 cup water w/red coloring	

Cream sugar and shortening till fluffy, add eggs, beat 1 minute.

Add vanilla and vinegar to milk.

Add soda and salt to flour.

Add milk and flour alternating to creamed mixture.

Mix cocoa with red water to make a paste, add to the rest of the ingredients, mix.

Bake 30 min. in 350 degree oven or until it springs back when touched. Cool, and split each cake to make 4 layers.

Icing:

1 cup milk	7 t. flour
1 cup powdered sugar	1 cup butter
1 t. vanilla	

Cook milk and flour till thick, refrigerate.

Cream butter and sugar, add vanilla.

Slowly incorporate sugar mixture with refrigerated flour mixture.

Ice cake sparingly.

Eat cake happily.

THIS IS NOT A FAT FREE CAKE!

VALLEY EVENTS

March 19

6:30 pm Executive Board- GMVCC-
King Portable.

7:30 pm Regular Meeting- GMVCC-
King Portable.

March 20

MLK Classes Dismissed

March 25

6:00 pm Joint MLK PTA & Site
Council Meeting

The Computer Lab at MLK School also

offers classes. Class dates are March
5th, 12th, 19th, 26th - from 6:00 p.m. -

8:00 p.m. Classes will be held in the
MLK School Computer Lab Room 12.

Instructor: Mrs. Tillie Porter

APPLICATION FOR GARDENS BY CANDLELIGHT TOUR

name:.....

address:.....

telephone:.....

please tell us a little about your garden; we want to know what is special about it:

.....
.....
.....
.....
.....
.....

when will be the best time to contact you to view your garden:

.....
.....
.....
.....

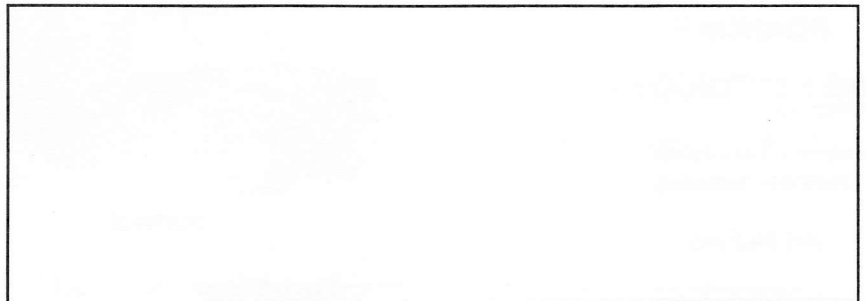
please return your application to **DARRELL WELSH**
 3317 E. HARRISON
 SEATTLE, WA 98112

GREATER MADISON VALLEY COMMUNITY
COUNCIL
2802 E. MADISON ST, BOX 184
SEATTLE, WA 98112

Non-Profit Org.
U.S. Postage
PAID
Seattle, WA
Permit No. 6873

*This newsletter is published
by the Greater Madison Valley
Community Council -
Member, Seattle Community
Council Federation*

*1995/1996 Officers:
President - Peter Triandafilou
Vice President - Charles McDade
Secretary - Vacant
Treasurer - Mike Seymour
phone # - 328-0058 (voice mail)*



**NEXT COMMUNITY COUNCIL
MEETING IS MARCH 19th!
VOTE MARCH 26th!**

